

LUNG CANCER AND PLEURAL CANCER: KNOWING THE DETAILS OF MY DIAGNOSIS

Patient : _____

Physician : _____ Date of diagnosis : ____/____/____

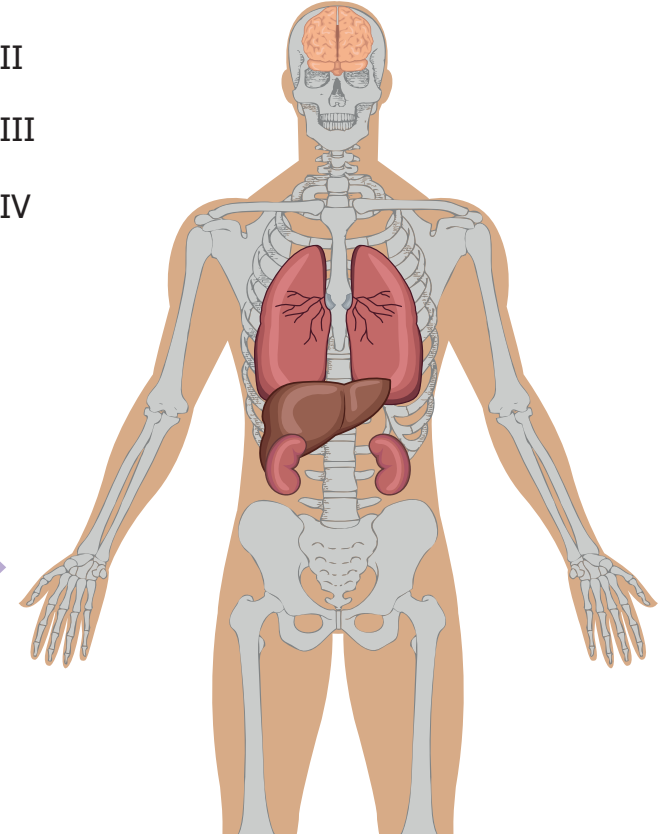
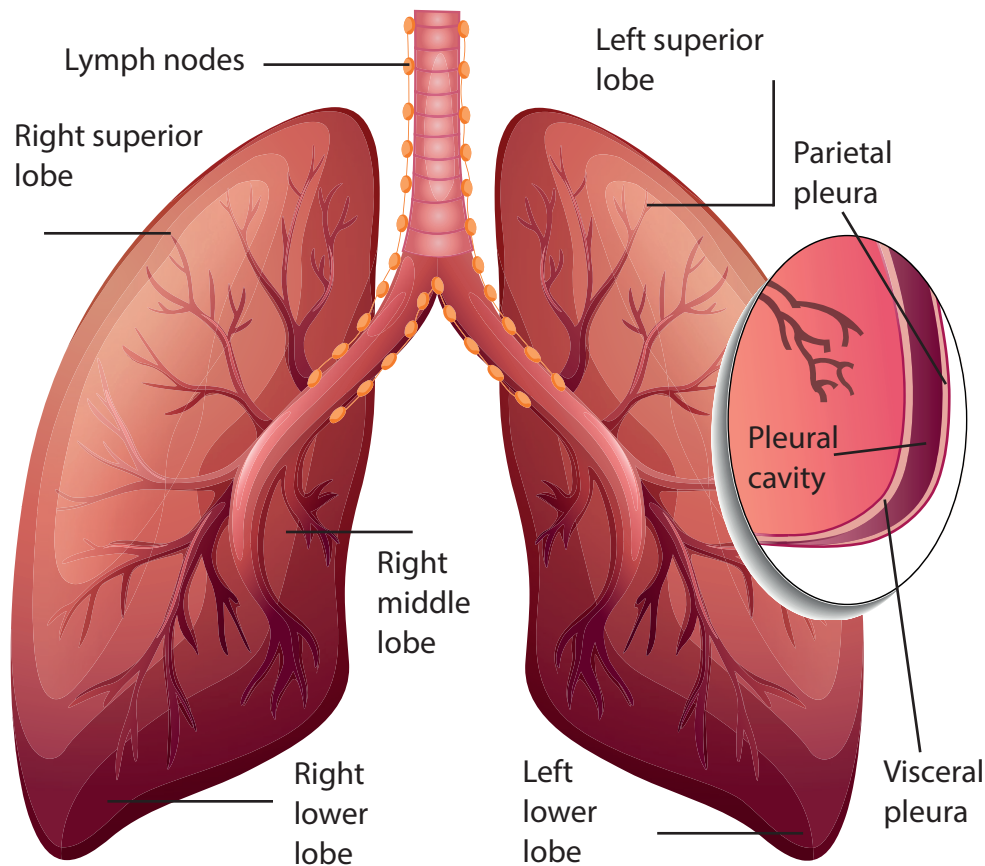
Location

Use this image to indicate the location of the tumor(s)

Disease progression stage

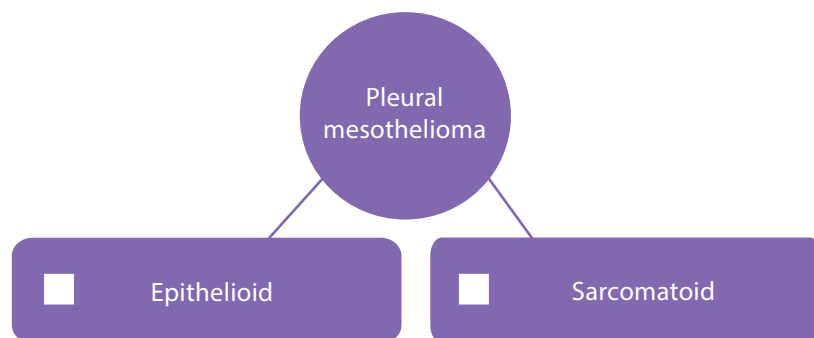
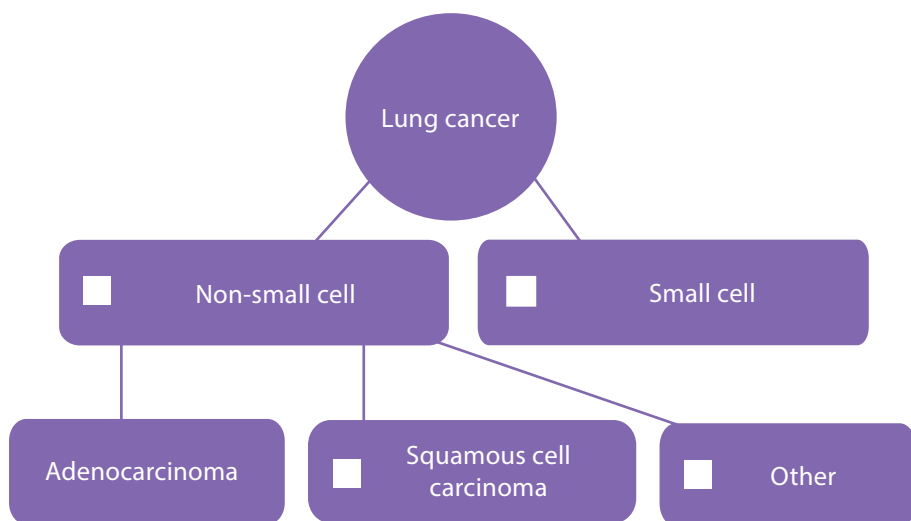
- Stage I
- Stage II
- Stage III
- Stage IV

If metastases are present, use this drawing to indicate their location. ➤



LUNG CANCER AND PLEURAL CANCER: KNOWING THE DETAILS OF MY DIAGNOSIS - MY TREATMENT PLAN -

Each person with lung cancer has a personalized treatment plan developed by their health care team. This plan may include one or more treatment options such as: surgery, radiation therapy, chemotherapy and targeted therapy, immunotherapy, comfort care and others.



Which of the following biomarker analyses were performed:

- ALK
 EGFR
 ROS1
 BRAF
 MET ex14
 NTRK
 PD-L1 expressed at _____%
 KRAS

Performance status : _____

0. You are fully active, able to perform the same activities as before the illness.
1. You are restricted in your physical activities, but you are ambulatory and able to perform light daily activities, such as light housework.
2. You are ambulatory and able to take care of yourself but are unable to perform activities. You are on your feet more than 50% of the day.
3. You have a very limited capacity and are bedridden or in a chair more than 50% of the day.
4. You are completely disabled, cannot take care of yourself and are bedridden or confined to a chair 100% of your day.

Treatment lines and objectives

First: _____

- Removing the tumor Slowing down the progression
 Reducing the risk of recurrence Treating the symptoms

Second: _____

- Removing the tumor Slowing down the progression
 Reducing the risk of recurrence Treating the symptoms